



**LOTT**

138-KV TRANSMISSION LINE PROJECT

## WELCOME TO OUR VIRTUAL OPEN HOUSE

As a result of the COVID-19 pandemic and social distancing recommendations made by the Centers for Disease Control and Prevention (CDC), AEP Ohio invites you to attend this virtual open house in order to minimize in-person contact. AEP Ohio remains committed to listening to your concerns and answering your questions, but we are also committed to keeping our customers and employees safe and healthy. We welcome your feedback via telephone and email as we strive to make the most informed decisions possible.

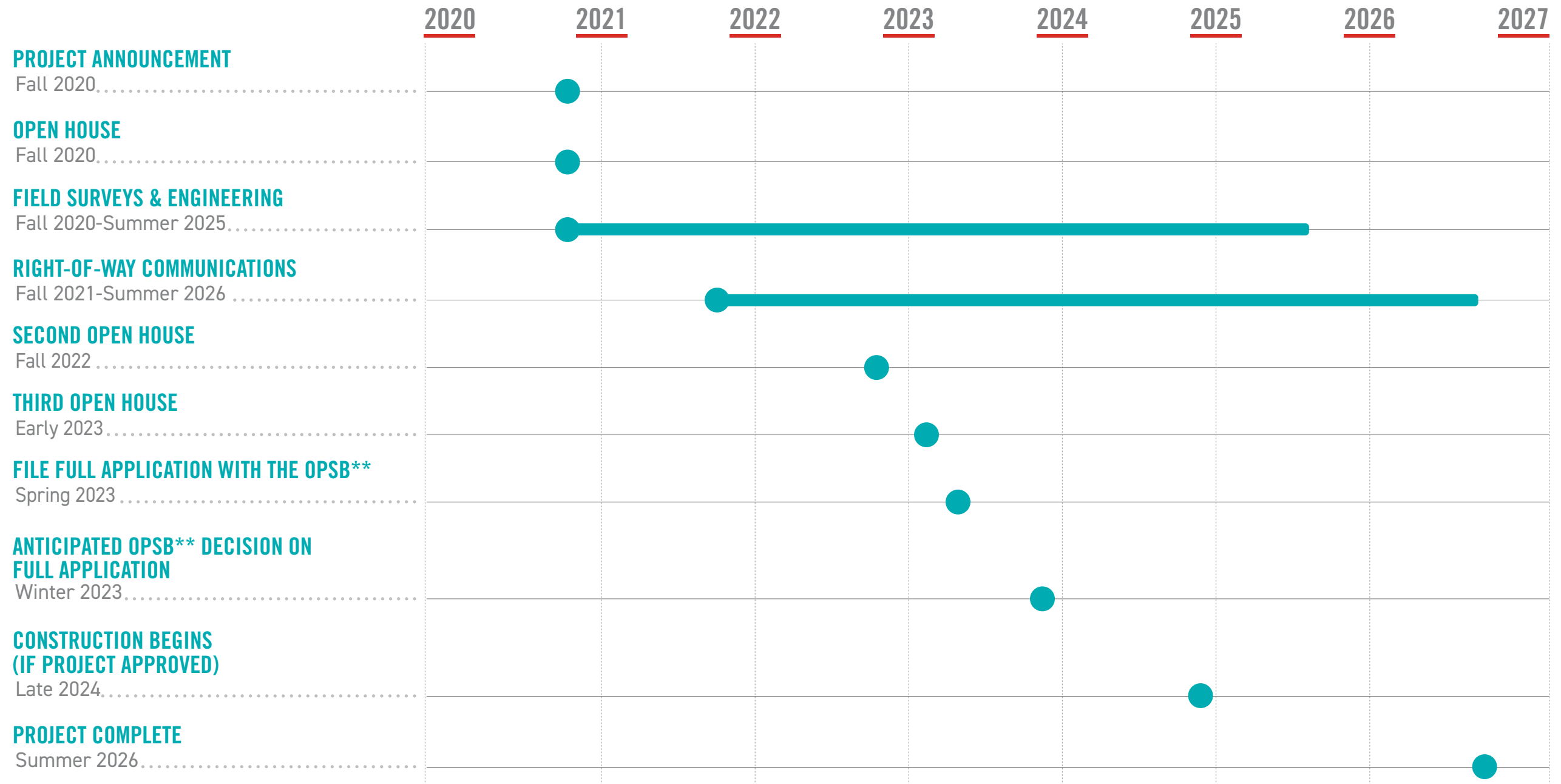
# PROJECT NEED & BENEFITS

## WHY IS THE PROJECT IMPORTANT TO OUR COMMUNITY?

### THE IMPROVEMENTS

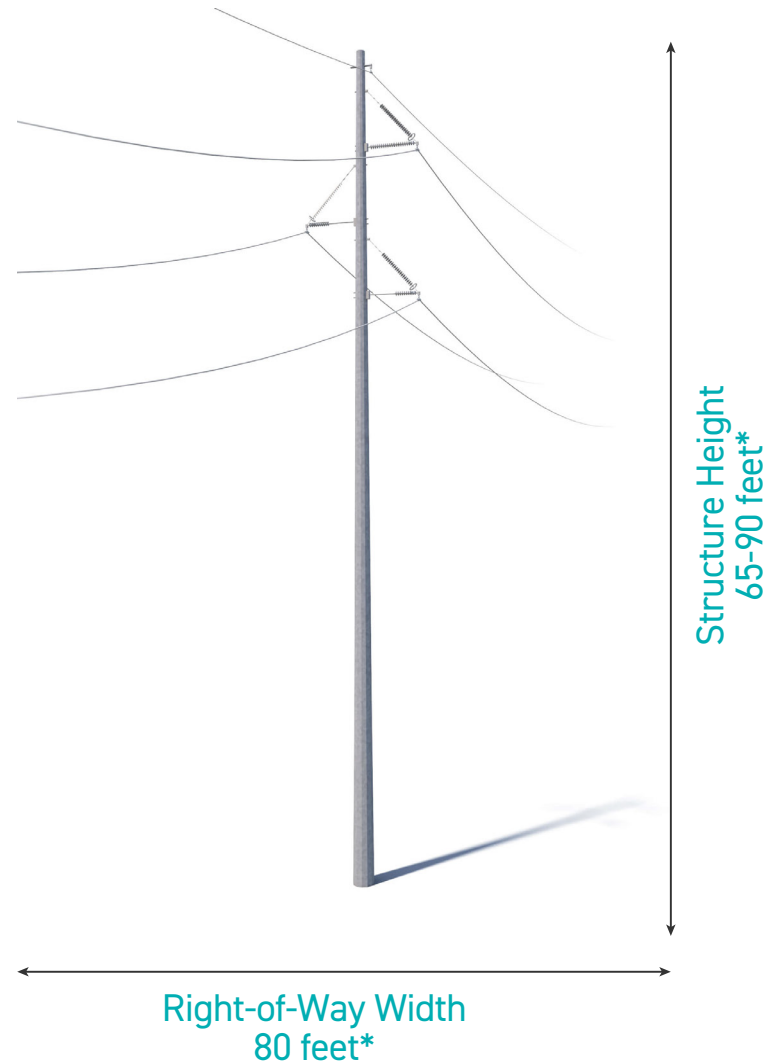
The proposed powerline provides an enhanced power source to Consolidated Cooperative's Lott Substation from AEP Ohio's Centerburg – Trent 138-kilovolt (kV) transmission line. The existing 34.5-kV power line has experienced nearly 5 million customer minutes of interruption since 2013. By connecting a 138-kV power line to the Lott Substation, Consolidated Cooperative can better serve area customers.

# PROJECT SCHEDULE



\*\*Timeline subject to change. \*OPSB: Ohio Power Siting Board

# PROPOSED STRUCTURES



The project involves the use of single steel poles.

Structure Height: 65-90 feet\*

Right-of-Way Width: 80 feet\*

\*Exact structure, height and right-of-way requirements may vary.

# RIGHT-OF-WAY

**AEP OHIO HAS TWO KEY PHILOSOPHIES THAT PERTAIN TO POWER LINE RIGHTS-OF-WAY:**



**1** Routes should cause the least possible disturbance to people and the environment.



**2** Property owners should be fairly compensated for any land rights that must be acquired.

# RIGHT-OF-WAY

AEP Ohio studies the land and proposes routes that reduce impacts on property owners.

AEP Ohio reaches out to landowners in the following ways:

## TO GAIN RIGHT-OF-ENTRY TO BEGIN:

- Environmental assessments
- Appraisal work
- Land surveying, soil boring and other field activities
- Cultural and historic resource reviews

## TO SECURE RIGHT-OF-WAY AND COMMUNICATE:

- Landowner compensation
- Terms and conditions of easement
- Width of the right-of-way

## TO OUTLINE AEP OHIO'S CONSTRUCTION PROCESS WITH A SPECIFIC FOCUS ON:

- Property restoration
- Damage mitigation as appropriate

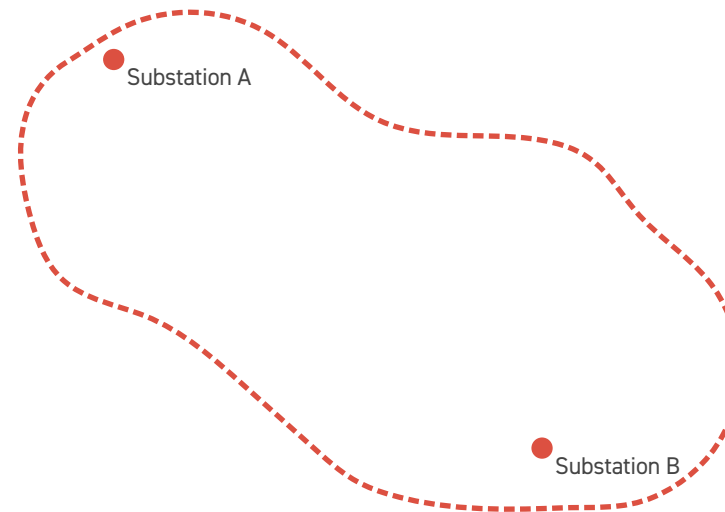


An AEP Company

BOUNDLESS ENERGY™

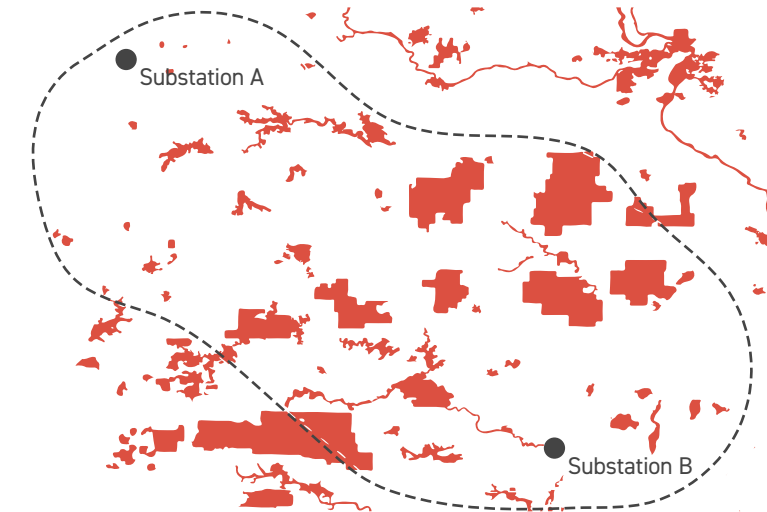
# ROUTING PROCESS

AEP Ohio implements a comprehensive siting process that takes land use, the environment, public input and engineering guidelines into account to develop a transmission line route. The information below illustrates each stage of the routing process.



## 1) STUDY AREA

AEP Ohio develops a study area for the project that incorporates both end points of the power line and the area between.



## 2) DATA GATHERING

Data is gathered for the defined study area including environmental, land use, historic and cultural resources, existing infrastructure and sensitive areas.

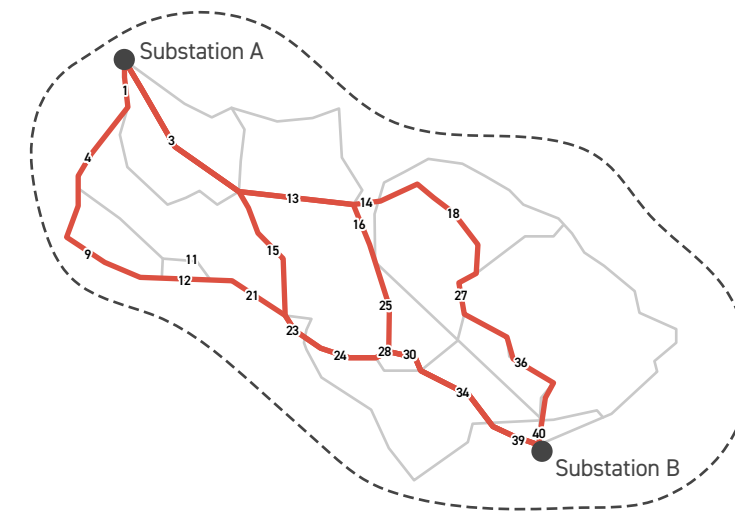
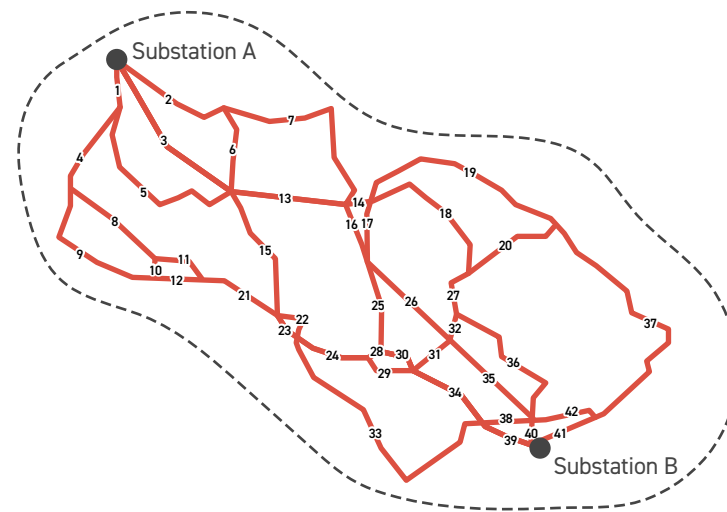
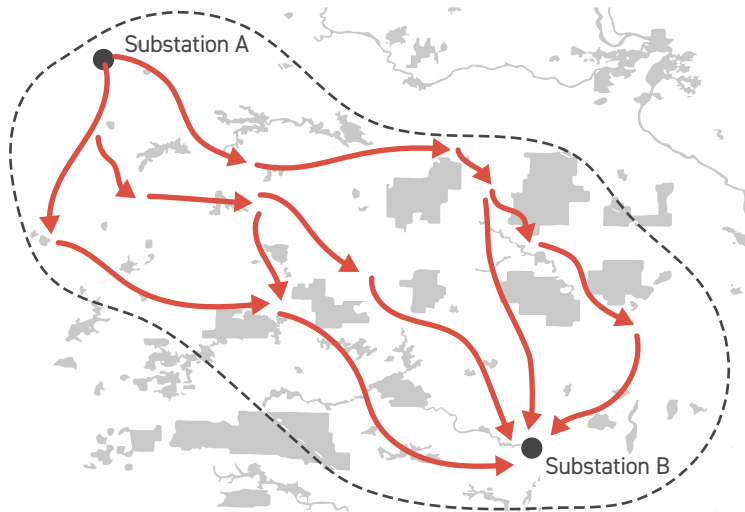




An AEP Company

BOUNDLESS ENERGY™

# ROUTING PROCESS



## 3) CONCEPTUAL ROUTES

The routing team uses this information to develop conceptual routes adhering to a series of general routing and technical guidelines.

## 4) STUDY SEGMENTS

Conceptual routes are broken up into study segments. Where two or more potential study segments intersect, a node is created, and between two nodes, a link is formed. Together, the network formed by these links is referred to as potential study segments.

## 5) REFINED STUDY SEGMENTS

As more information is gathered, the study segments are refined. Some study segments are eliminated or modified, leaving the refined study segments for further consideration.

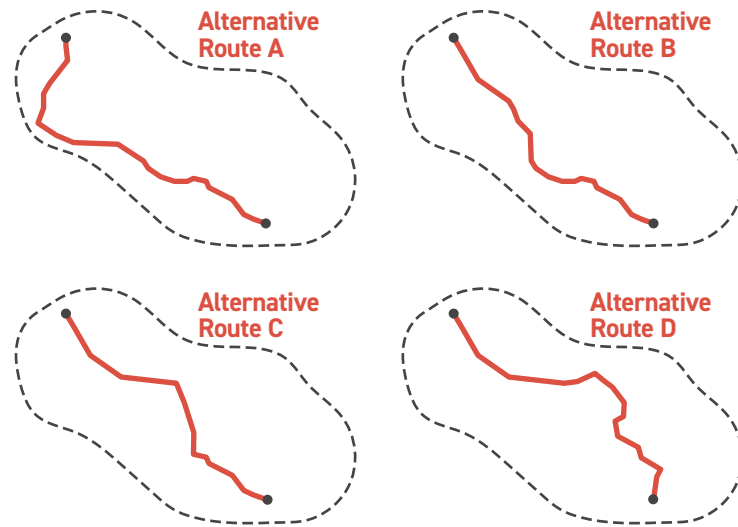




An AEP Company

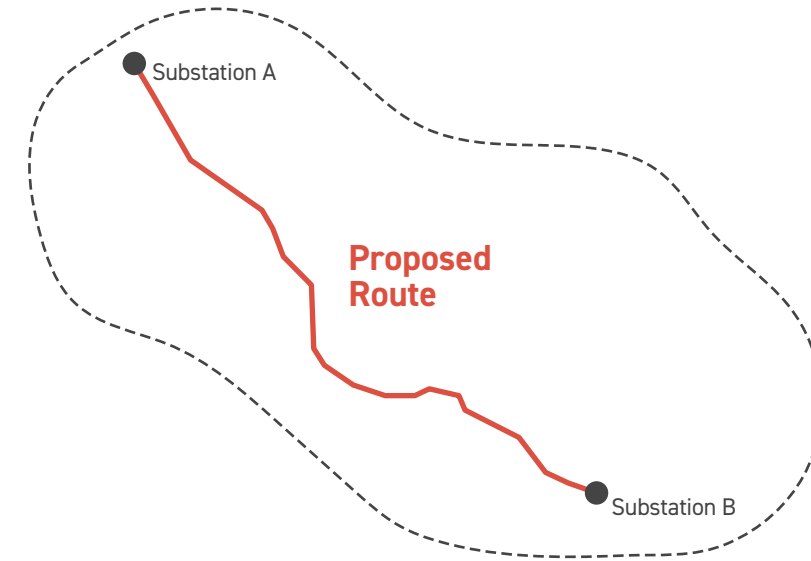
BOUNDLESS ENERGY™

# ROUTING PROCESS



## 6) ALTERNATIVE ROUTES

After public input is gathered, study segments are further refined and evaluated. The most suitable segments are selected and assembled into alternative route options.



## 7) PROPOSED ROUTE

Alternative routes are assessed and a proposed route is chosen. The proposed route minimizes impact to the community and environment, while considering cost, line length and design requirements.



# LOTT

## 138-KV TRANSMISSION LINE PROJECT

### THANK YOU!

Thank you for visiting the project virtual open house. For more information and project updates please visit the project website, or contact us with any additional questions.



**REPLAY  
OPEN HOUSE**



**DOWNLOAD  
SLIDE DECK**



**CONTACT US**



**VISIT PROJECT  
WEBSITE**